

STMicroelectronics
Via Tolomeo 1
20010 Comaredo (MI)
Italy

ENGINEER:		TITLE: X-NUCLEO-IKS01A2	
PCB DESIGNER:			
DATE: 29.6.2015		PART NO: Top Layer	REV: 1.0
FILE NAME: X-NUCLEO-IKS01A2.PcbDoc		VARIANT: [No Variations]	SCALE:

1

2

3

4

A

A

B

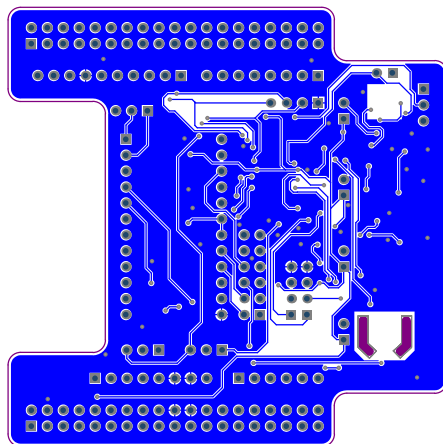
B

C

C

D

D



STMicroelectronics
Via Tolomeo 1
20010 Comaredo (MI)
Italy

ENGINEER:

PCB DESIGNER:

DATE:
29.6.2015

FILE NAME:
X-NUCLEO-IKS01A2.PcbDoc

TITLE:

X-NUCLEO-IKS01A2

PART NO:
Bottom Layer

VARIANT:
[No Variations]

REV:
1.0

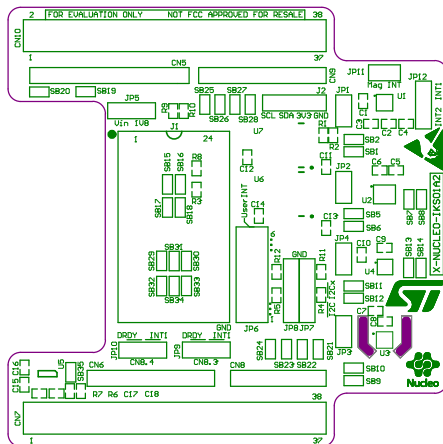
SCALE:


1

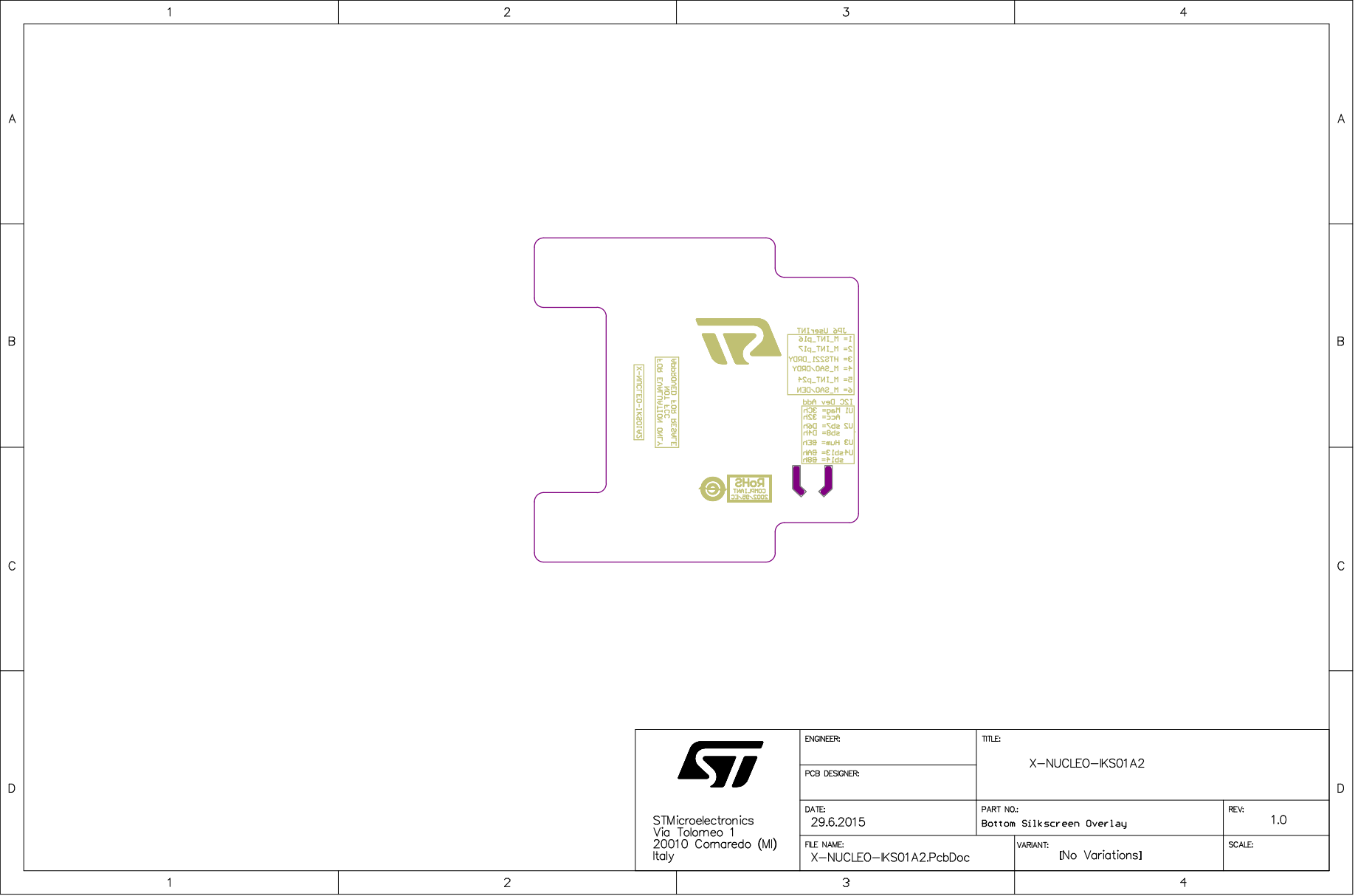
2


3

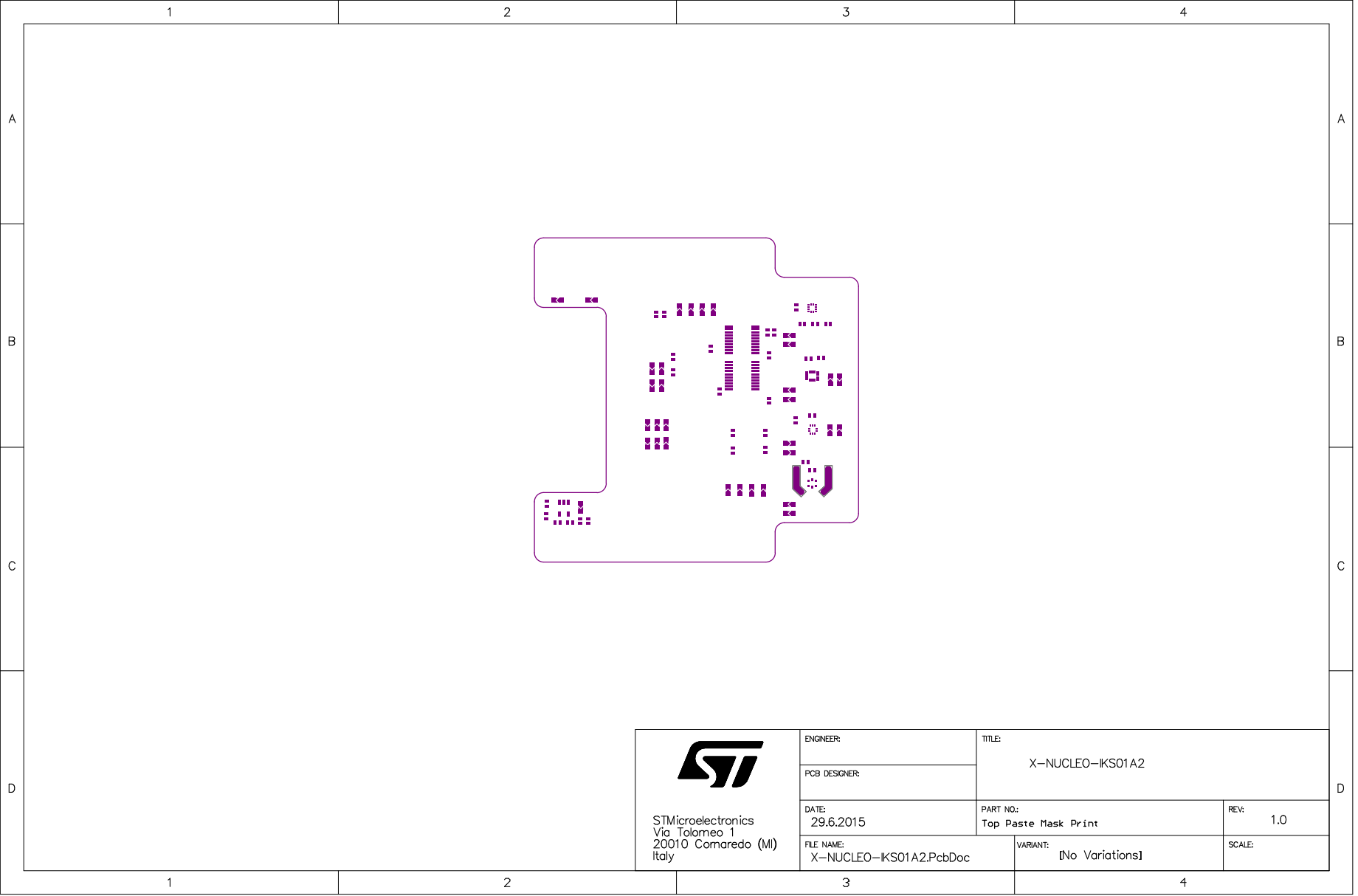
4



 STMicroelectronics Via Tolomeo 1 20010 Comaredo (MI) Italy	ENGINEER:	TITLE: X-NUCLEO-IKS01A2		
	PCB DESIGNER:			
	DATE: 29.6.2015	PART NO: Top Silkscreen Overlay	REV: 1.0	
	FILE NAME: X-NUCLEO-IKS01A2.PcbDoc	VARIANT: [No Variations]	SCALE:	

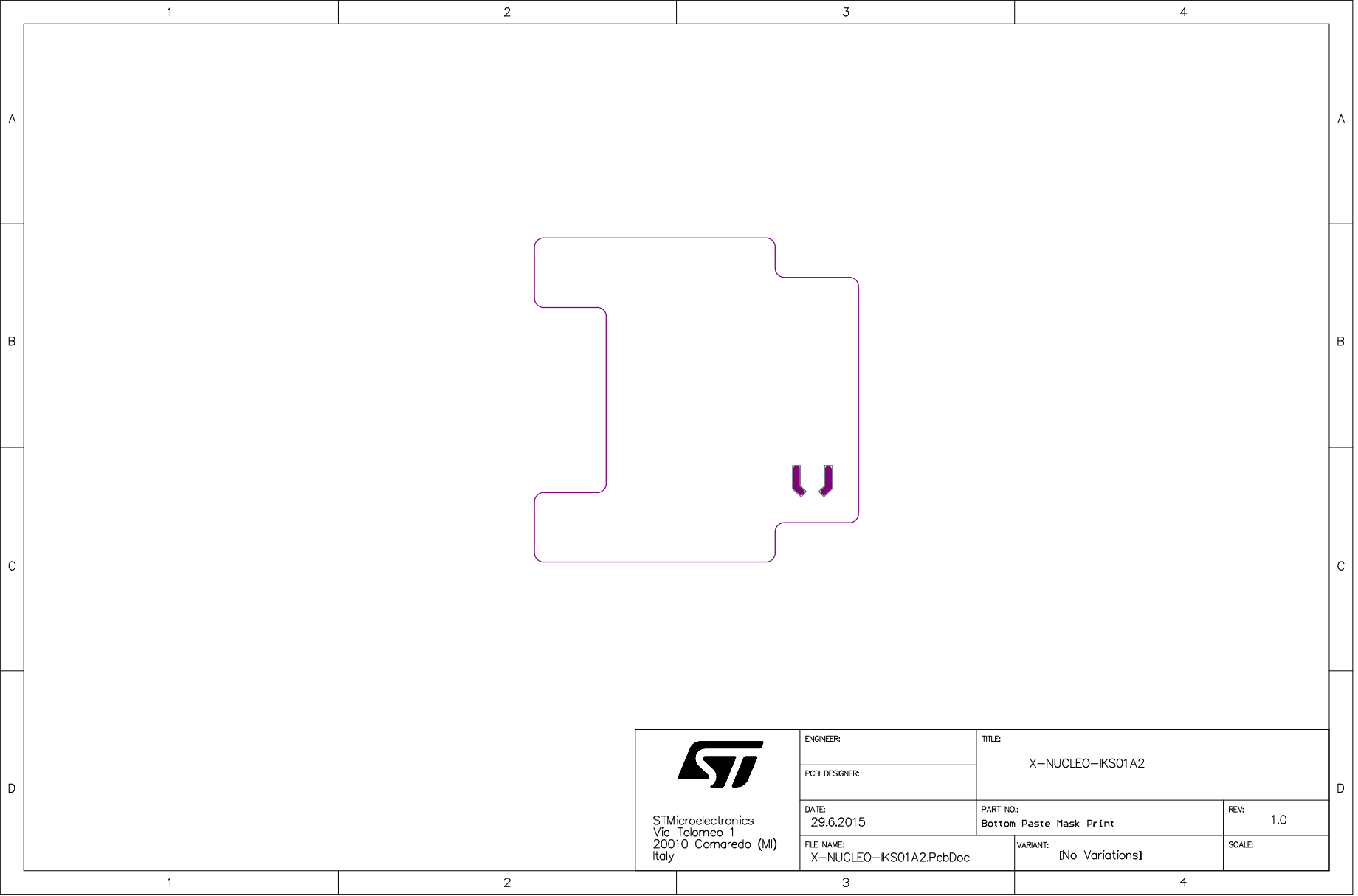



 STMicroelectronics Via Tolomeo 1 20010 Comaredo (MI) Italy	ENGINEER:		TITLE: X-NUCLEO-IKS01A2		
	PCB DESIGNER:				
	DATE: 29.6.2015		PART NO: Bottom Silkscreen Overlay		REV: 1.0
	FILE NAME: X-NUCLEO-IKS01A2.PcbDoc		VARIANT: [No Variations]		SCALE:

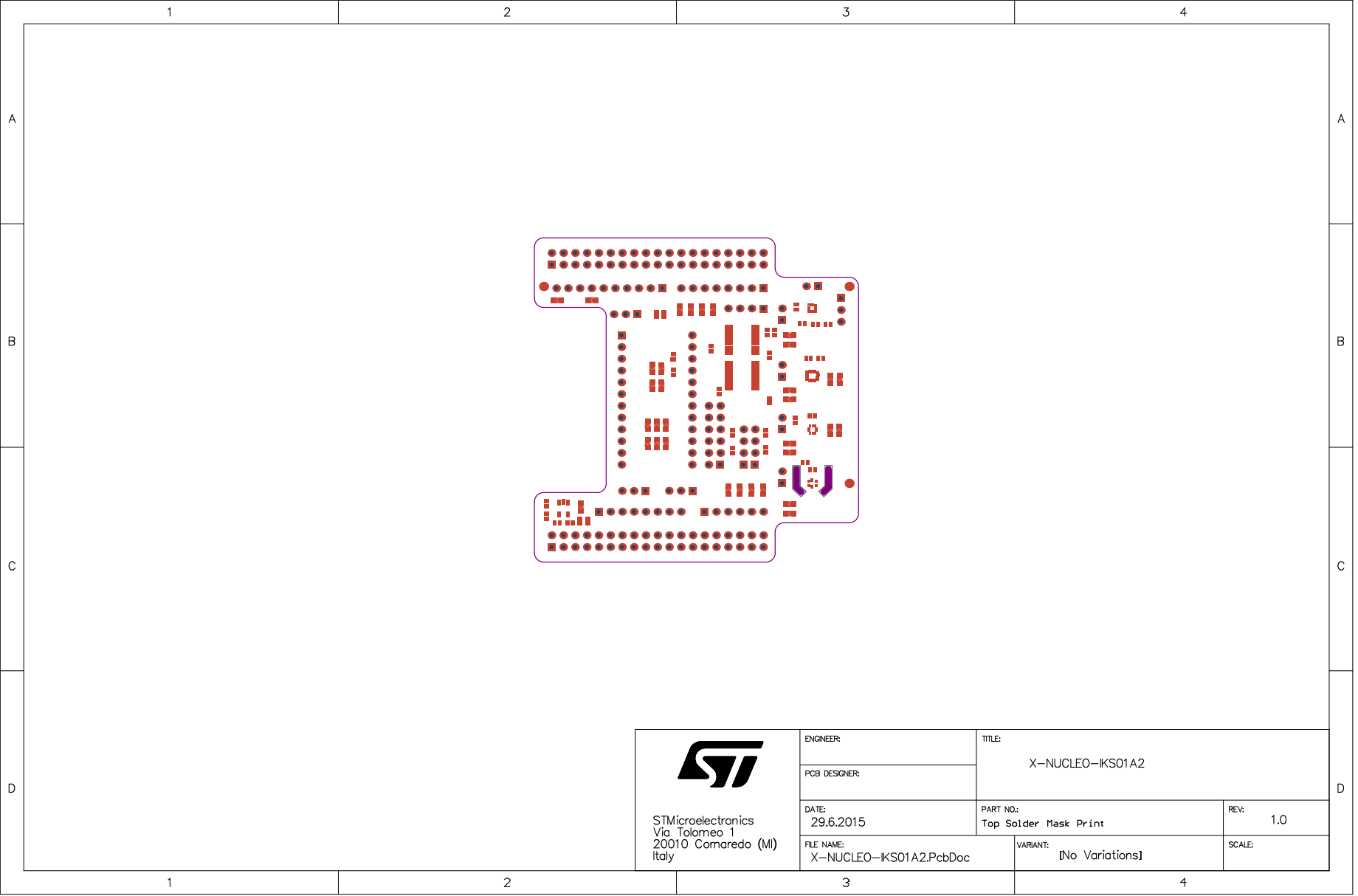



STMicroelectronics
Via Tolomeo 1
20010 Comaredo (MI)
Italy

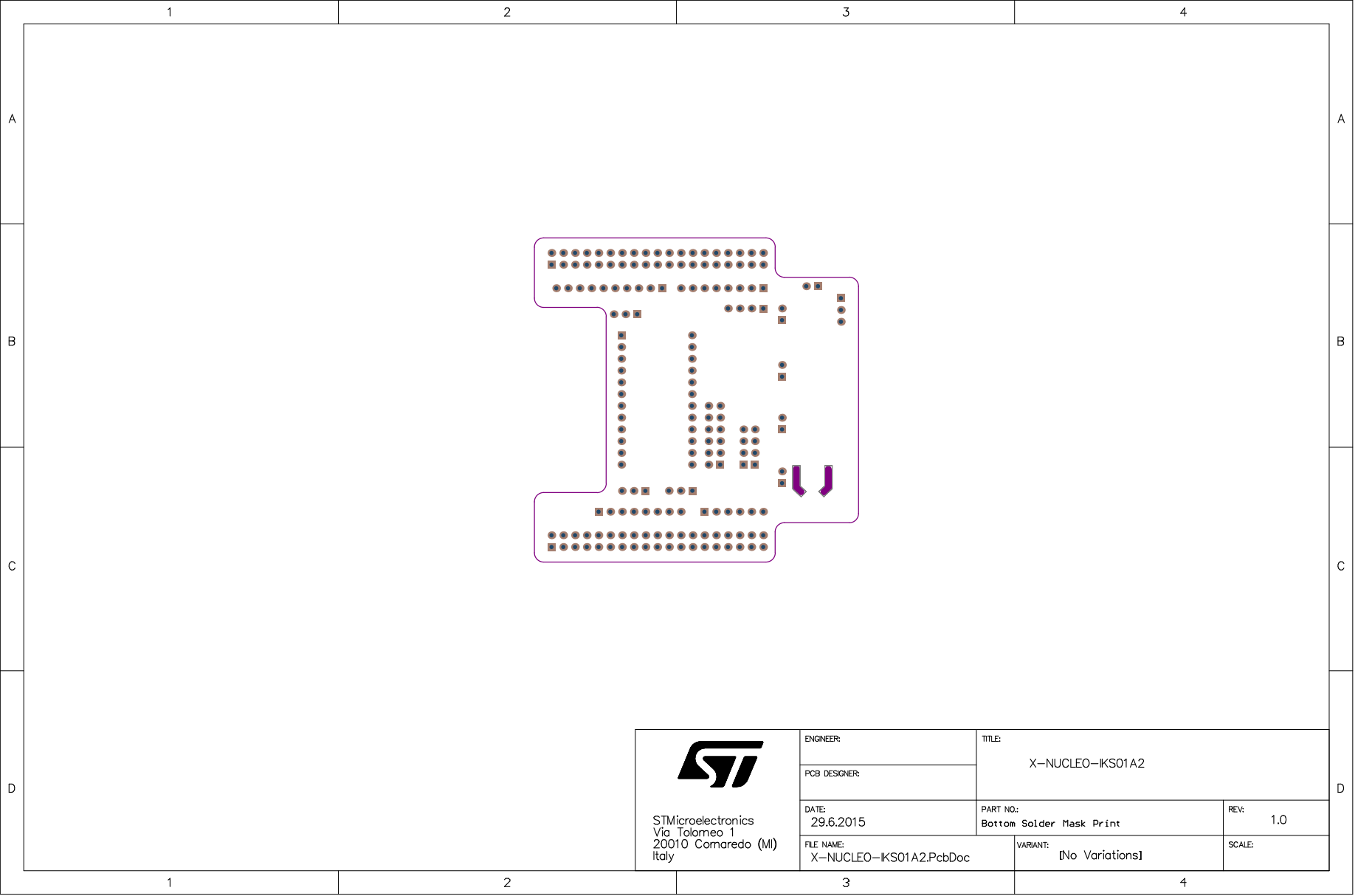
ENGINEER:		TITLE: X-NUCLEO-IKS01A2	
PCB DESIGNER:			
DATE: 29.6.2015	PART NO: Top Paste Mask Print		REV: 1.0
FILE NAME: X-NUCLEO-IKS01A2.PcbDoc		VARIANT: [No Variations]	SCALE:




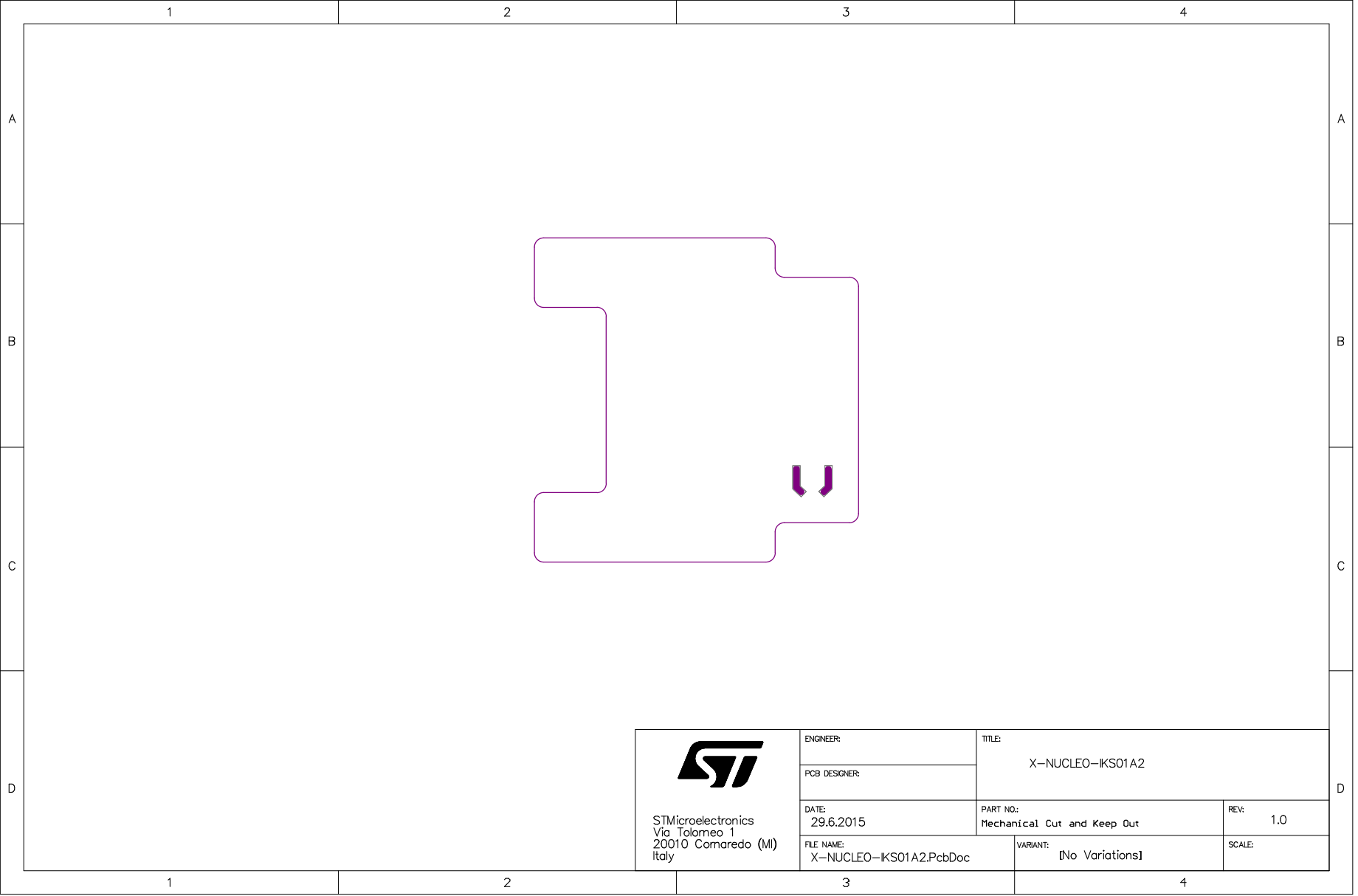
 STMicroelectronics Via Tolomeo 1 20010 Comaredo (MI) Italy	ENGINEER:		TITLE: X-NUCLEO-IKS01A2		
	PCB DESIGNER:				
	DATE: 29.6.2015		PART NO: Bottom Paste Mask Print		REV: 1.0
	FILE NAME: X-NUCLEO-IKS01A2.PcbDoc		VARIANT: [No Variations]		SCALE:




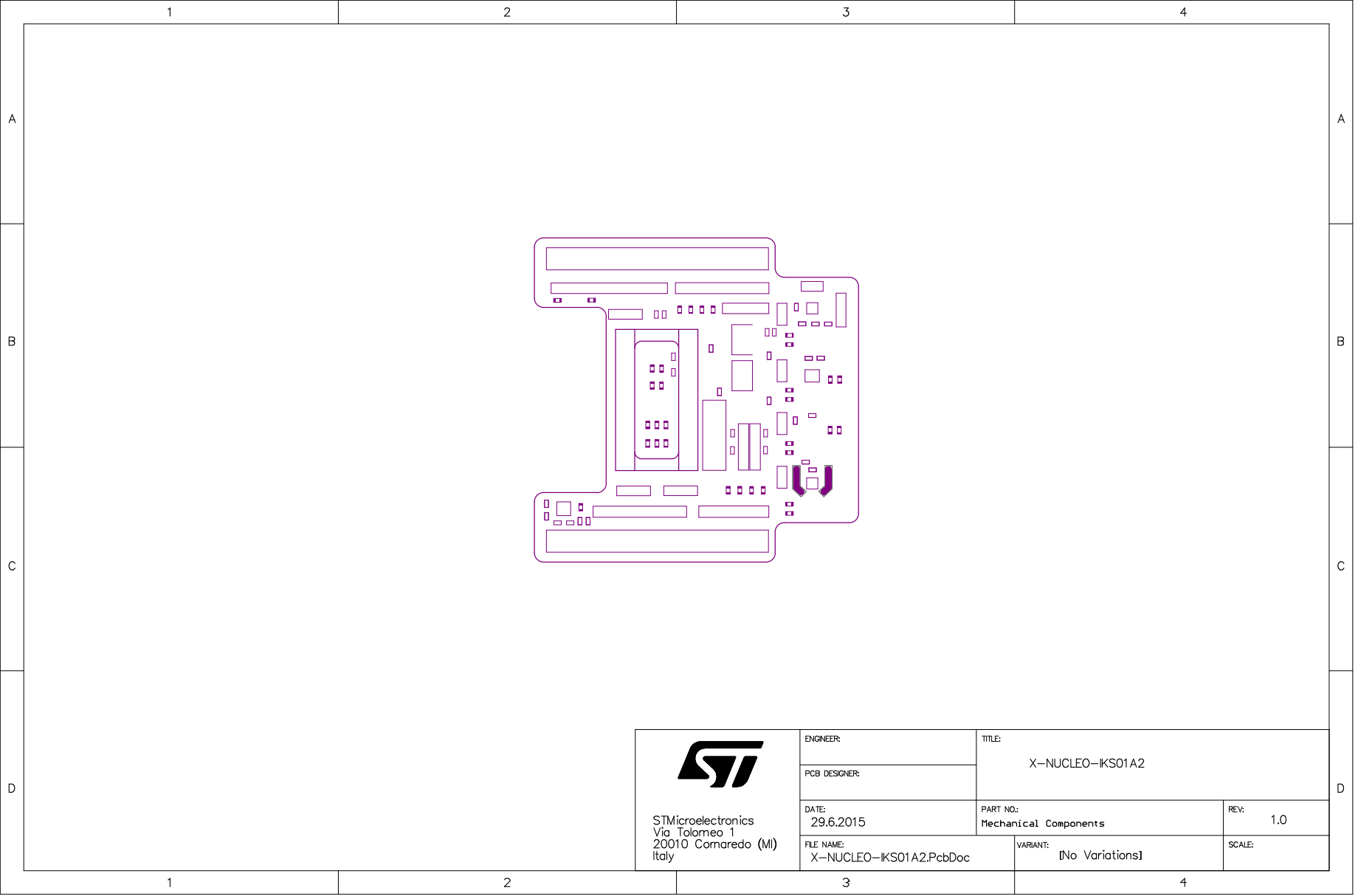
 STMicroelectronics Via Tolomeo 1 20010 Comaredo (MI) Italy	ENGINEER:		TITLE: X-NUCLEO-IKS01A2		
	PCB DESIGNER:				
	DATE: 29.6.2015		PART NO: Top Solder Mask Print		REV: 1.0
	FILE NAME: X-NUCLEO-IKS01A2.PcbDoc		VARIANT: [No Variations]		SCALE:




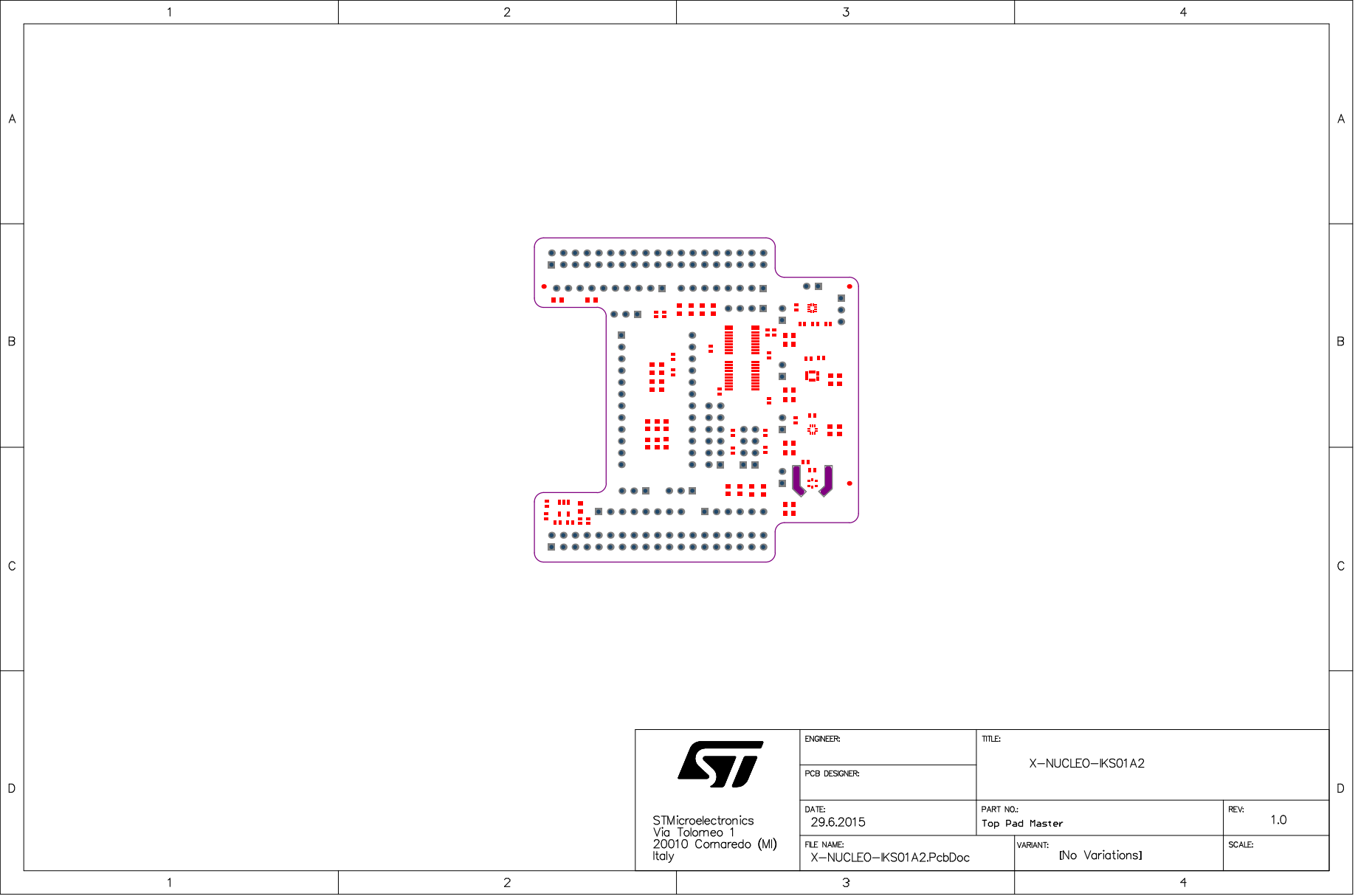
 STMicroelectronics Via Tolomeo 1 20010 Comaredo (MI) Italy	ENGINEER:		TITLE: X-NUCLEO-IKS01A2		
	PCB DESIGNER:				
	DATE: 29.6.2015		PART NO: Bottom Solder Mask Print		REV: 1.0
	FILE NAME: X-NUCLEO-IKS01A2.PcbDoc		VARIANT: [No Variations]		SCALE:




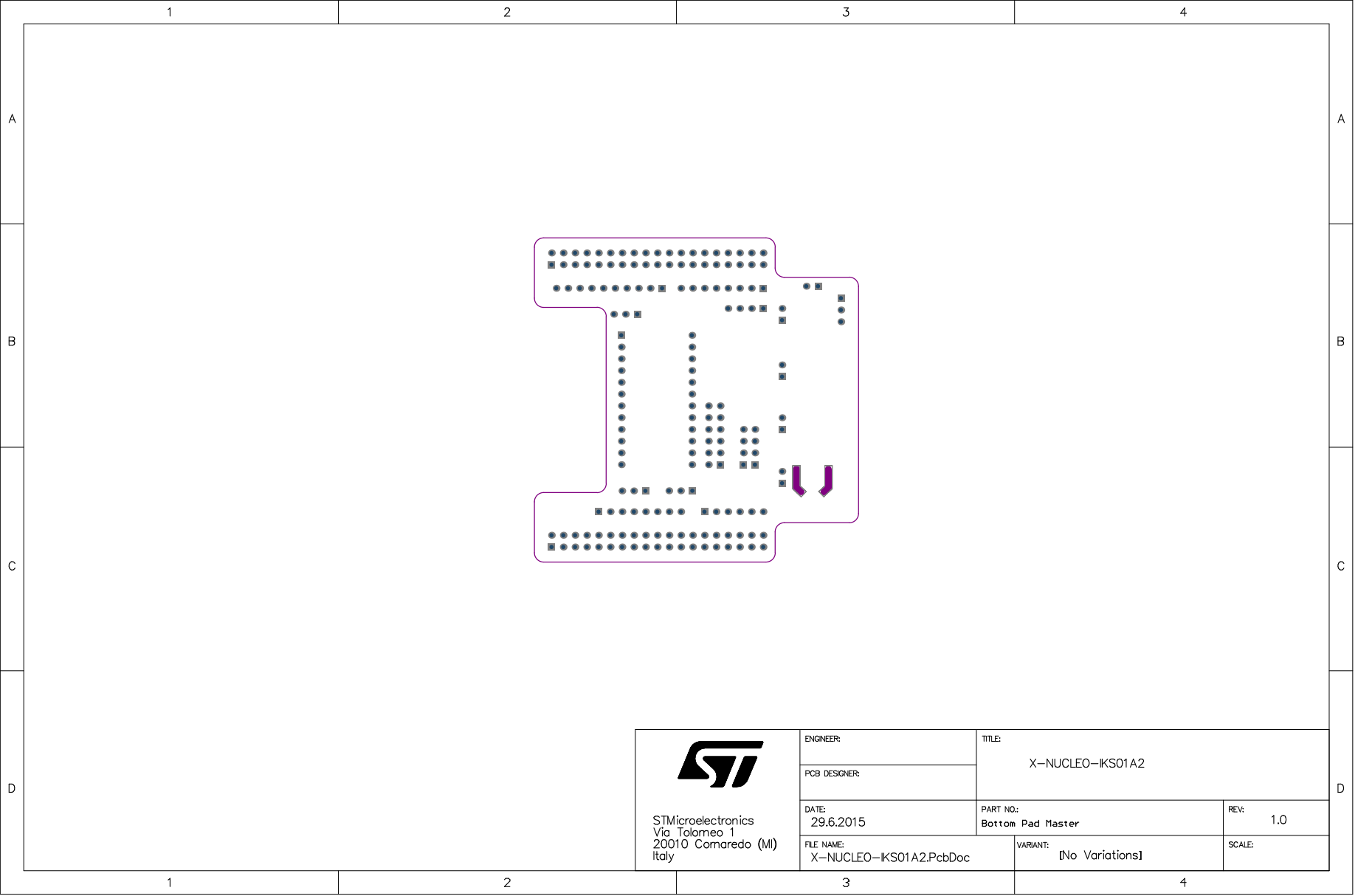
 STMicroelectronics Via Tolomeo 1 20010 Comaredo (MI) Italy	ENGINEER:		TITLE: X-NUCLEO-IKS01A2		
	PCB DESIGNER:				
	DATE: 29.6.2015		PART NO: Mechanical Cut and Keep Out		REV: 1.0
	FILE NAME: X-NUCLEO-IKS01A2.PcbDoc		VARIANT: [No Variations]		SCALE:



 STMicroelectronics Via Tolomeo 1 20010 Comaredo (MI) Italy	ENGINEER:		TITLE: X-NUCLEO-IKS01A2	
	PCB DESIGNER:			
	DATE: 29.6.2015	PART NO: Mechanical Components		REV: 1.0
	FILE NAME: X-NUCLEO-IKS01A2.PcbDoc		VARIANT: [No Variations]	SCALE:

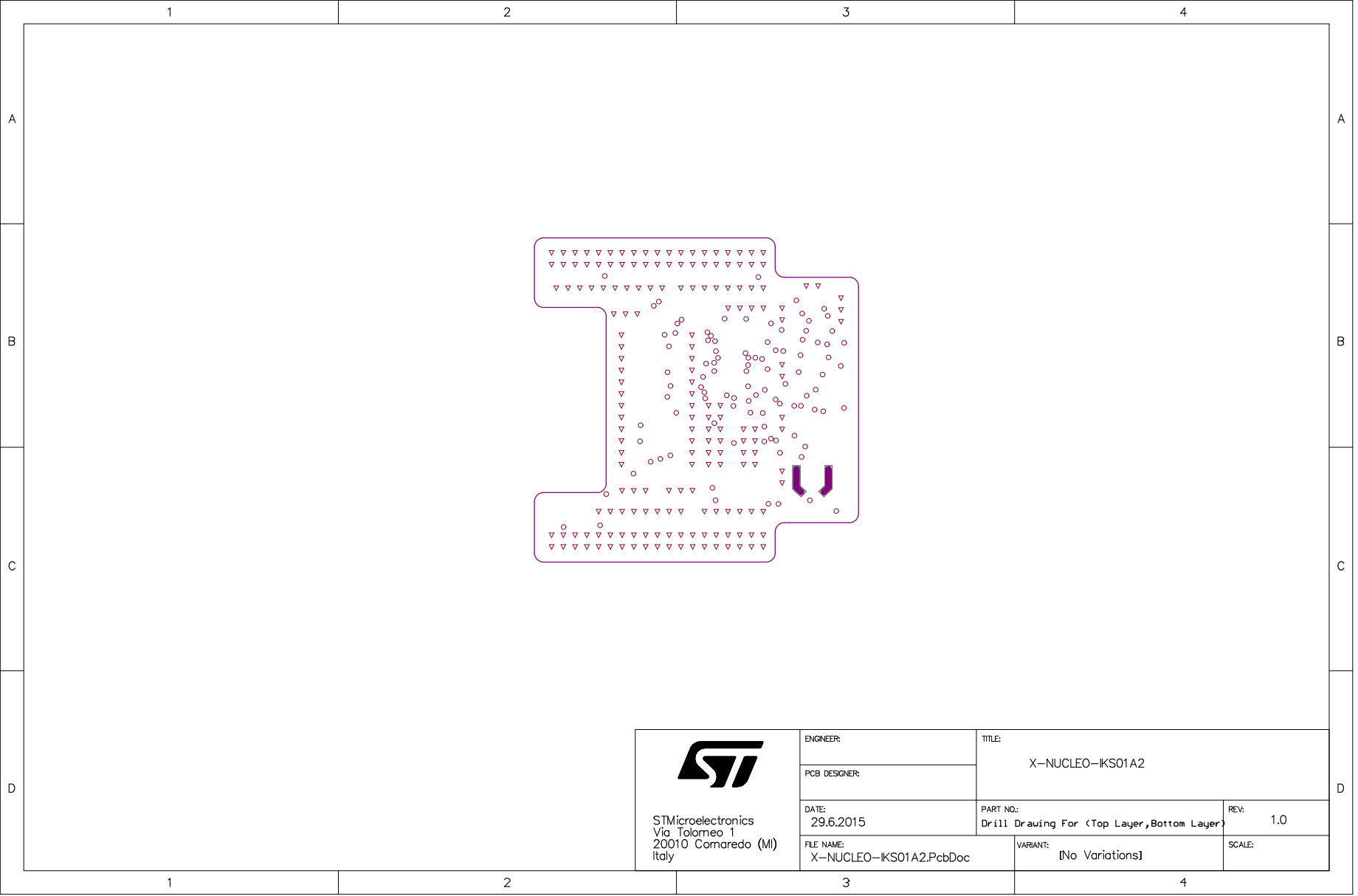



 STMicroelectronics Via Tolomeo 1 20010 Comaredo (MI) Italy	ENGINEER:		TITLE: X-NUCLEO-IKS01A2		
	PCB DESIGNER:				
	DATE: 29.6.2015		PART NO: Top Pad Master		REV: 1.0
	FILE NAME: X-NUCLEO-IKS01A2.PcbDoc		VARIANT: [No Variations]		SCALE:

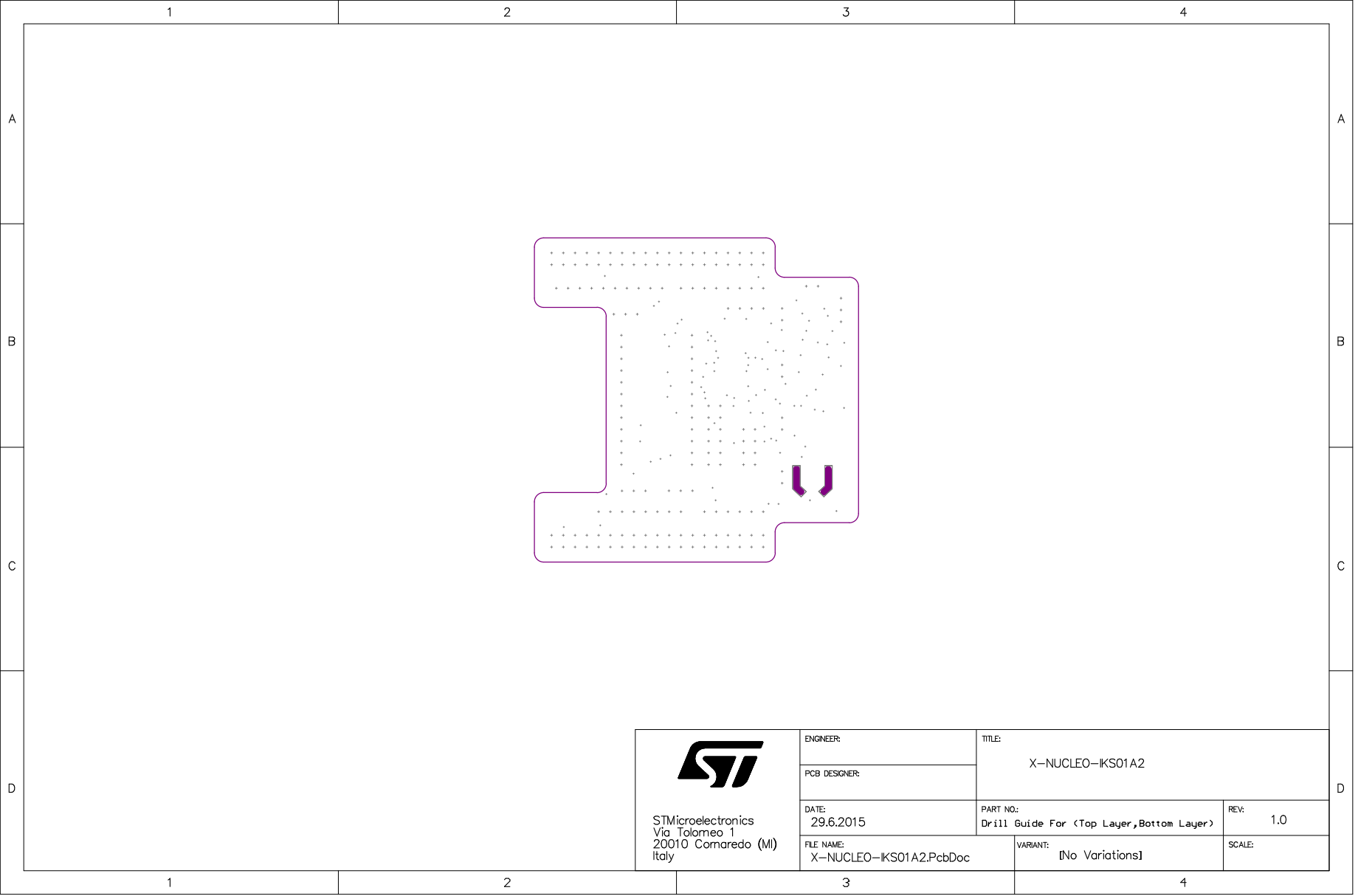



STMicroelectronics
Via Tolomeo 1
20010 Comaredo (MI)
Italy

ENGINEER:		TITLE: X-NUCLEO-IKS01A2		
PCB DESIGNER:				
DATE: 29.6.2015		PART NO: Bottom Pad Master		REV: 1.0
FILE NAME: X-NUCLEO-IKS01A2.PcbDoc		VARIANT: [No Variations]		SCALE:



 STMicroelectronics Via Tolomeo 1 20010 Comaredo (MI) Italy	ENGINEER:	TITLE: X-NUCLEO-IKS01A2		
	PCB DESIGNER:			
	DATE: 29.6.2015	PART NO: Drill Drawing For (Top Layer,Bottom Layer)	REV: 1.0	
	FILE NAME: X-NUCLEO-IKS01A2.PcbDoc	VARIANT: [No Variations]	SCALE:	



 STMicroelectronics Via Tolomeo 1 20010 Comaredo (MI) Italy	ENGINEER:		TITLE: X-NUCLEO-IKS01A2	
	PCB DESIGNER:			
	DATE: 29.6.2015	PART NO: Drill Guide For (Top Layer,Bottom Layer)		REV: 1.0
	FILE NAME: X-NUCLEO-IKS01A2.PcbDoc		VARIANT: [No Variations]	SCALE: